

ICAO APAC MET/ATM Seminar 2015

Keynote address

Tokyo, Japan, 29th June 2015



MET Services for ATM and Related Collaboration in Japan

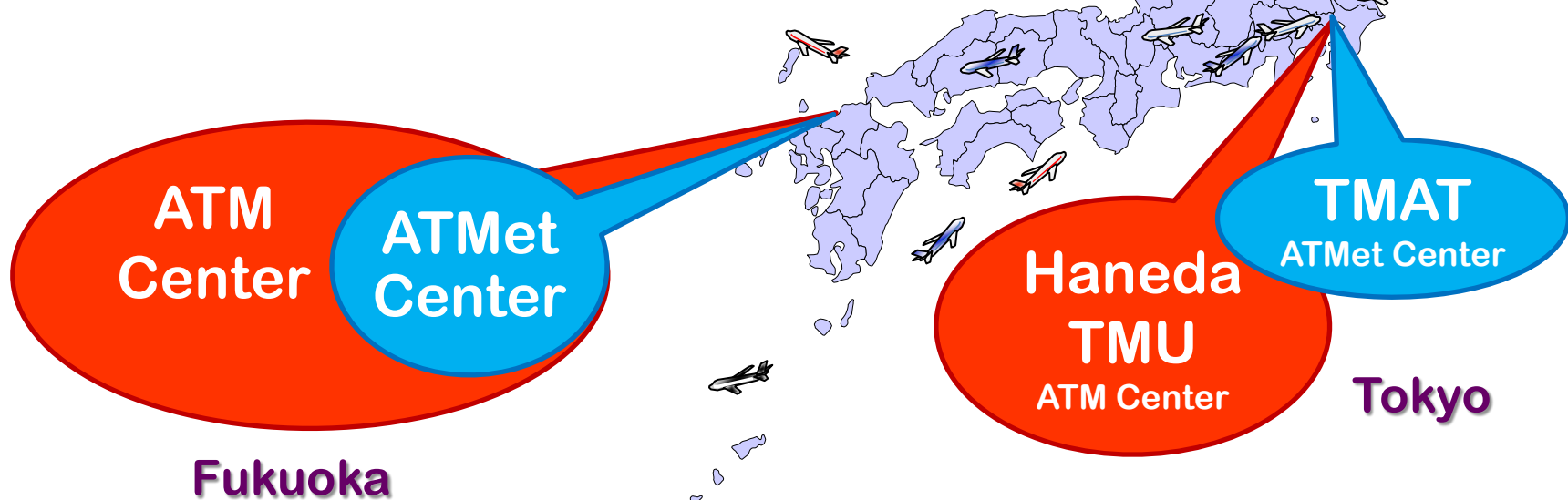
Toshihiro Kurauchi
Director, Aeronautical Meteorology Division
Japan Meteorological Agency (JMA)

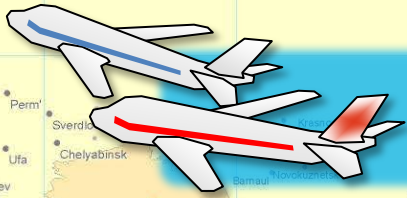
(Background: Mt. Fuji from the sky)



Oct. 2005	ATM Center developed from ATFM Center
Feb. 2006	ICAO APAC MET/ATM Co-ordination Seminar
	ATM Center operation started
	ATMet Center operation started
Dec. 2009	ICAO APAC MET/ATM TF/1
Jan. 2011	ICAO APAC MET/ATM Seminar & MET/ATM TF/2
Oct. 2011	Haneda TMU operation started
Nov. 2013	ICAO APAC MET/ATM Seminar & MET/R TF/3
Jul. 2014	TMAT operation fully started
Jun. 2015	ICAO APAC MET/ATM Seminar & MET/R TF/4

TMU: Traffic Management Unit
 TMAT: Tokyo Metropolitan Area Team





Air traffic growth

New air navigation systems

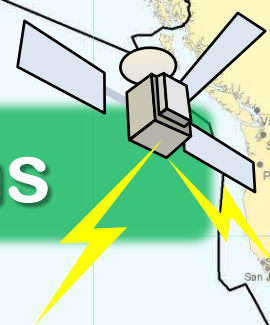
**Asia/Pacific
Seamless ATM
Plan (2013)**

**Global Air
Navigation Plan**

**Global ATM
Operational Concept**

**Aviation System
Block Upgrade**

**Further progress
in aviation MET
services**



Recommendation 2/10 — Development of meteorological service for the terminal area

That ICAO, in close coordination with WMO, be tasked to:

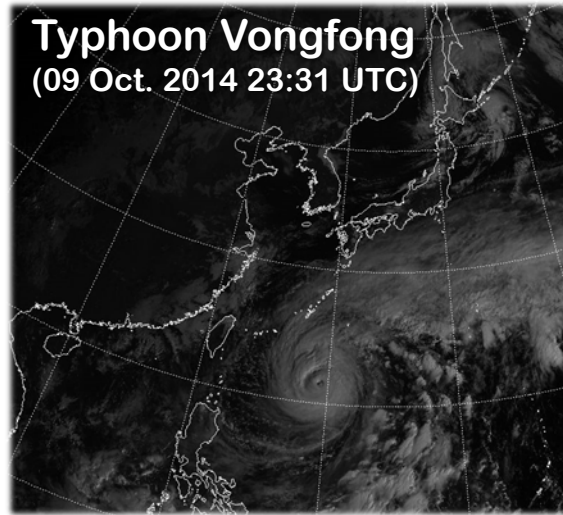
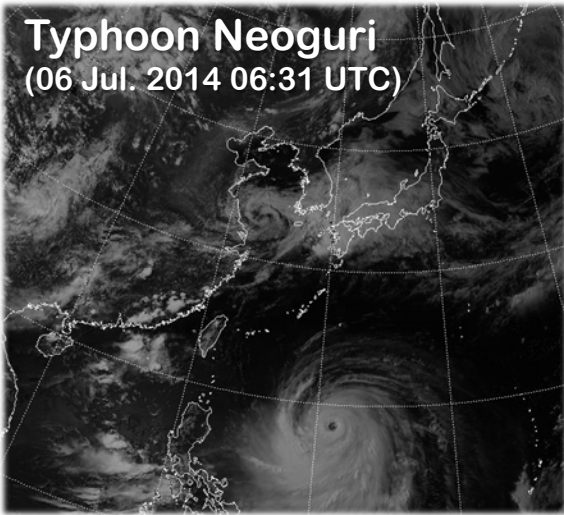
- a) include meteorological service for the terminal area and other relevant operational requirements in Block 1 and subsequent blocks of the aviation system block upgrade methodology to highlight potential related impacts on air traffic flow in consideration of air traffic control and air traffic management (ATM);
- b) develop ATM-tailored meteorological service for the terminal area to meet future ATM requirements identified by the *Global Air Navigation Plan* (Doc 9750) and reflect the appropriate functional and performance requirements in the relevant provisions, noting outcomes from ICAO expert groups on meteorology, ATM and flight operations.;
- c) develop guidance on verification methodology toward the continuous improvement of meteorological information to ATM; and
- d) integrate the information concerning meteorological service for the terminal area into the future system-wide information management environment underpinning the future globally interoperable ATM system.

Recommendation 2/13 — Development of provisions for aeronautical meteorological information services in the context of CDM and common situational awareness

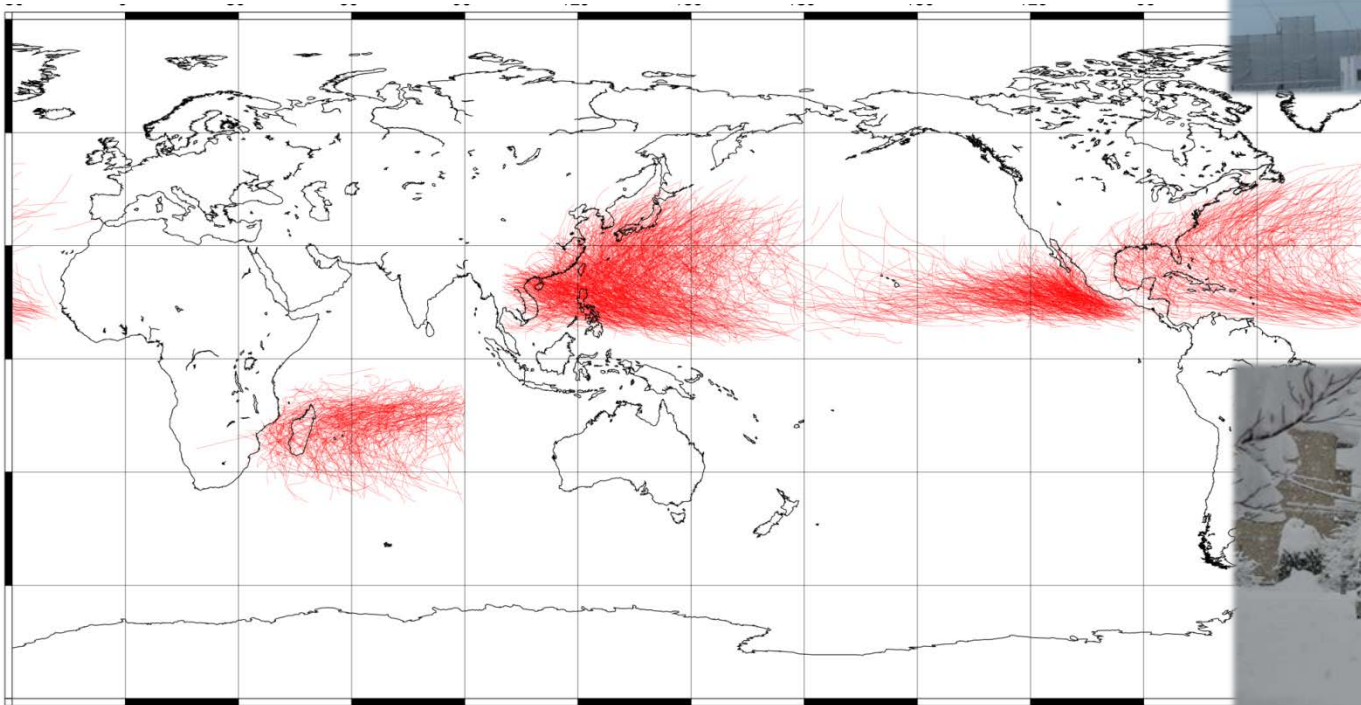
That ICAO and WMO ensure the development of provisions for aeronautical meteorological information services that promote collaborative decision making (CDM) and common situational awareness among the air traffic management (ATM) community.



**ICAO Meteorology Divisional Meeting 2014
(Montréal, Canada, July 2014)**

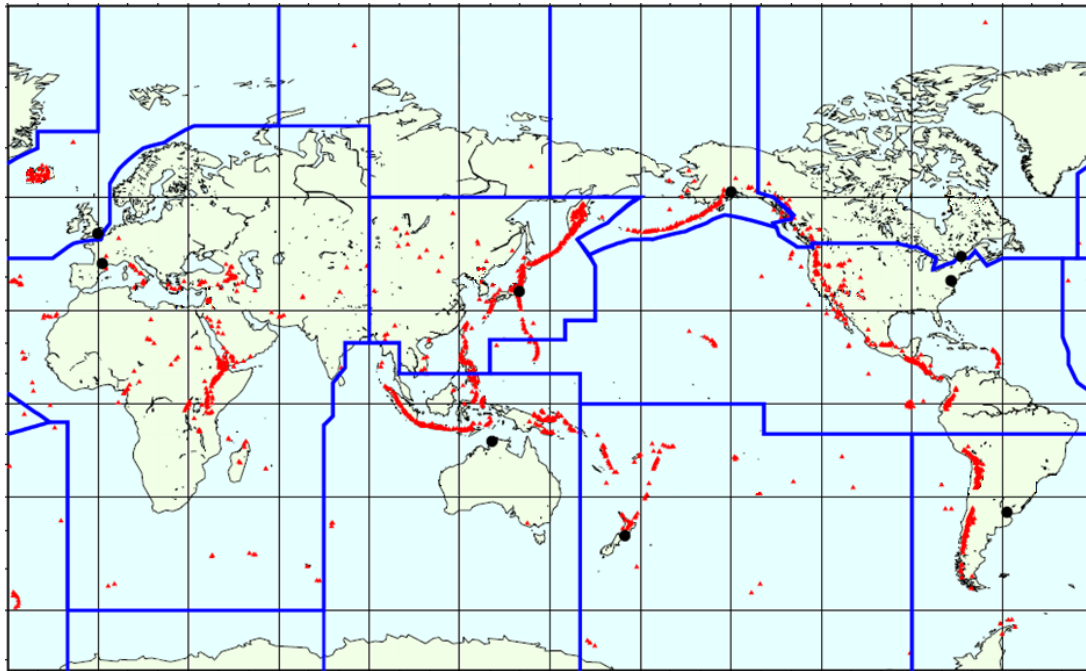


← Visible images from
MTSAT-2 (Himawari-7)



Tropical Cyclones, 1980 – 2012 (IBTrACS, plotted by JMA)





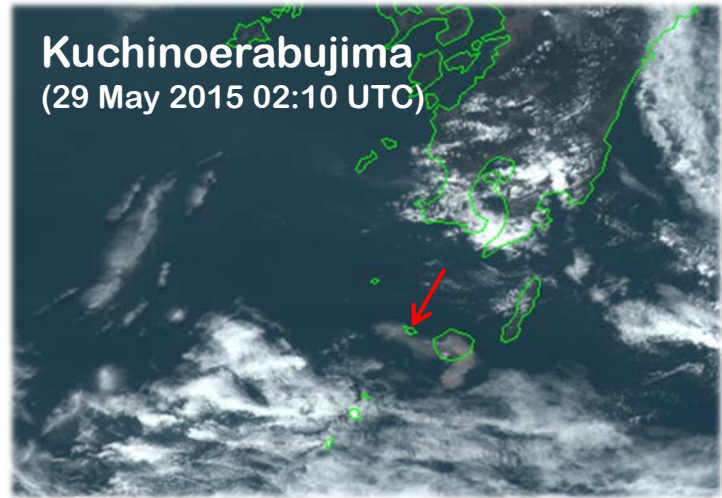
Major active volcanoes and VAAC Areas of Responsibility



Shinmoedake
(2011)



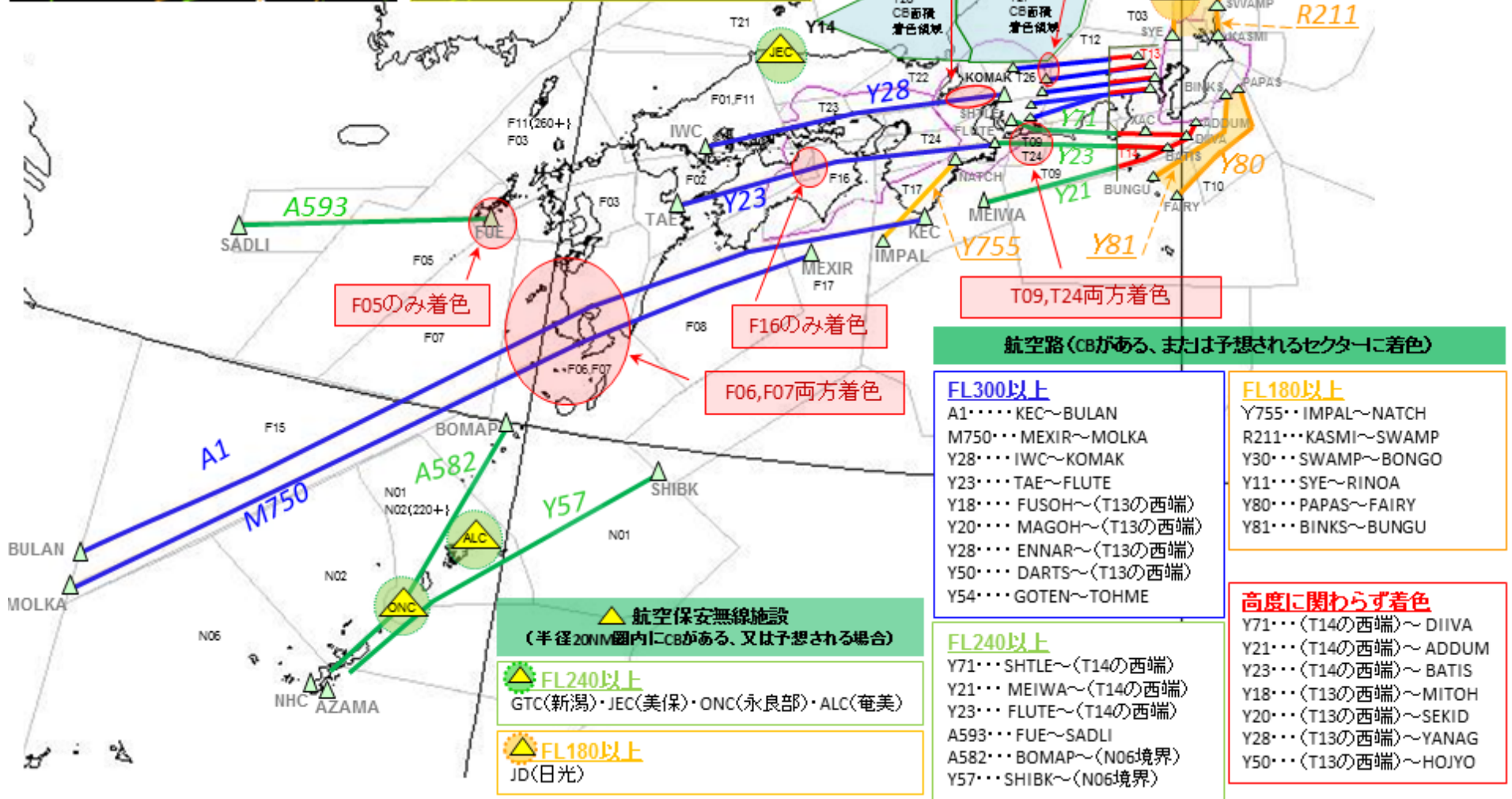
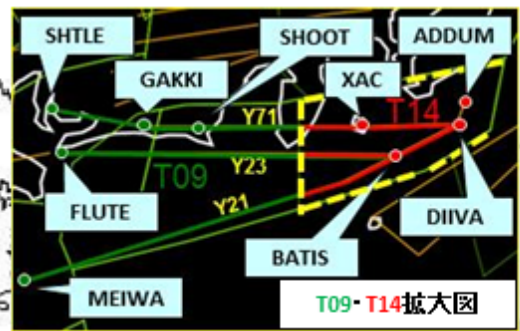
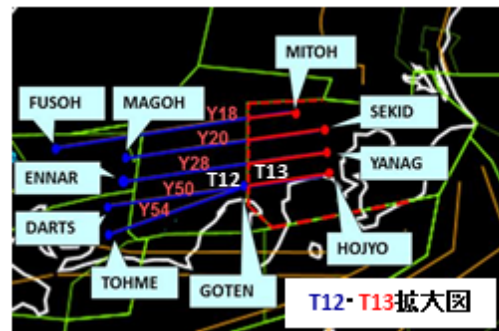
Izu-Oshima
(1986)



Kuchinoerabujima
(29 May 2015 02:10 UTC)



Sakurajima
(18 Aug. 2013)



Now I know
what ATM
Officers need!



ATMet Center in ATM Center operations office



← ATMet Center briefing



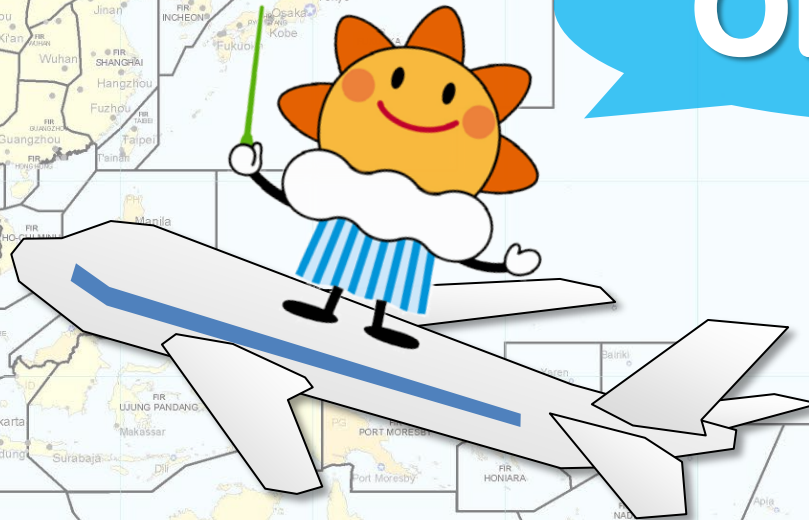
Four steps for MET-ATM collaboration

1. Discussions with ATM Officers
2. Understand of ATM services & related requirements
3. Development of MET products to meet requirements
4. Development of MET & ATM systems to meet requirements

Thank you for listening !



One Sky



[JMA website]

<http://www.jma.go.jp/jma/indexe.html>

[Aeronautical Meteorology Division, JMA]

E-mail: aero-jma@met.kishou.go.jp

Tel/Fax: +81 3 3212 8968